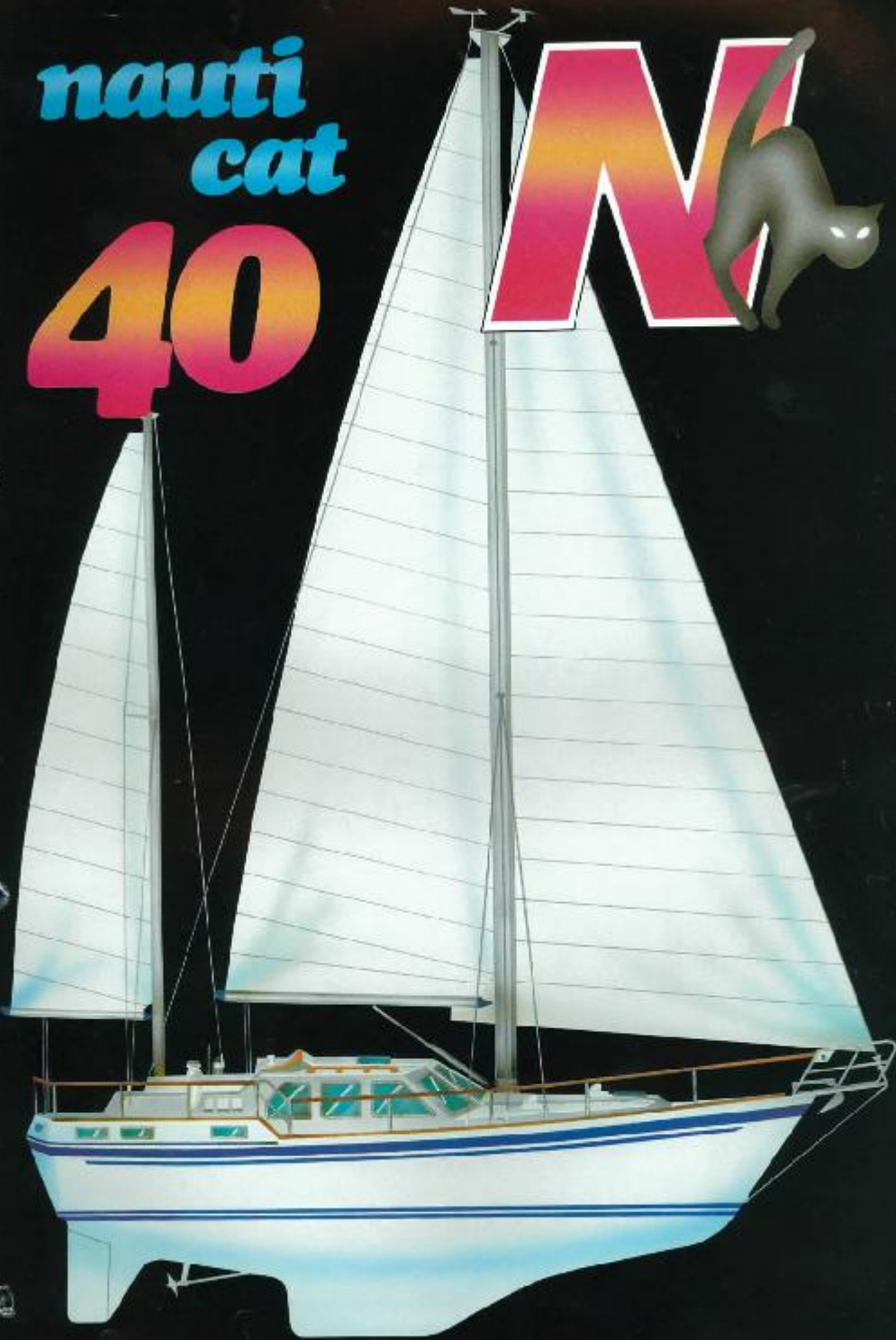
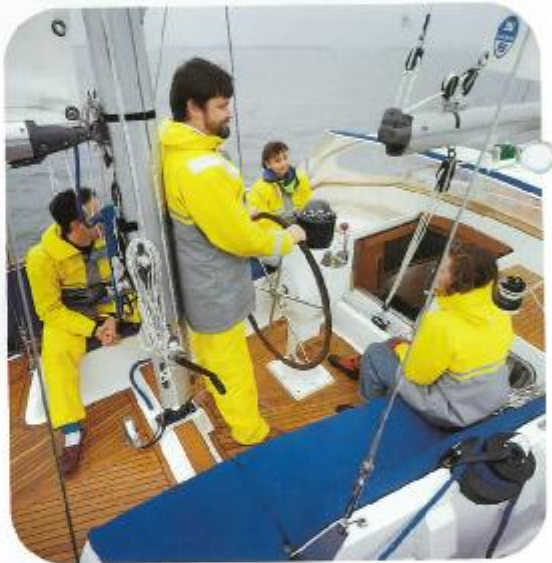


nauti
cat

40

M

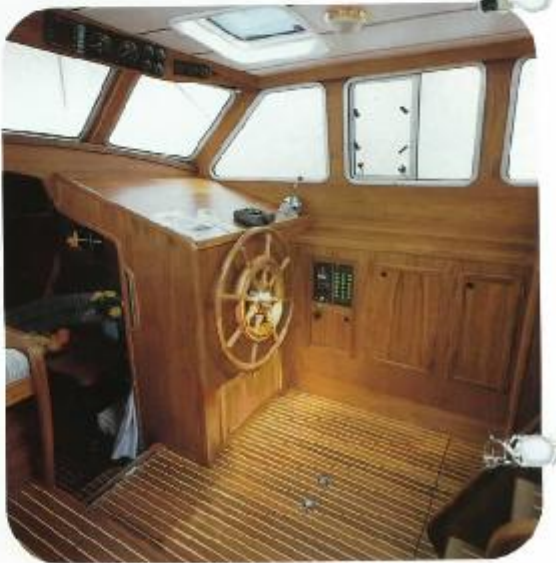




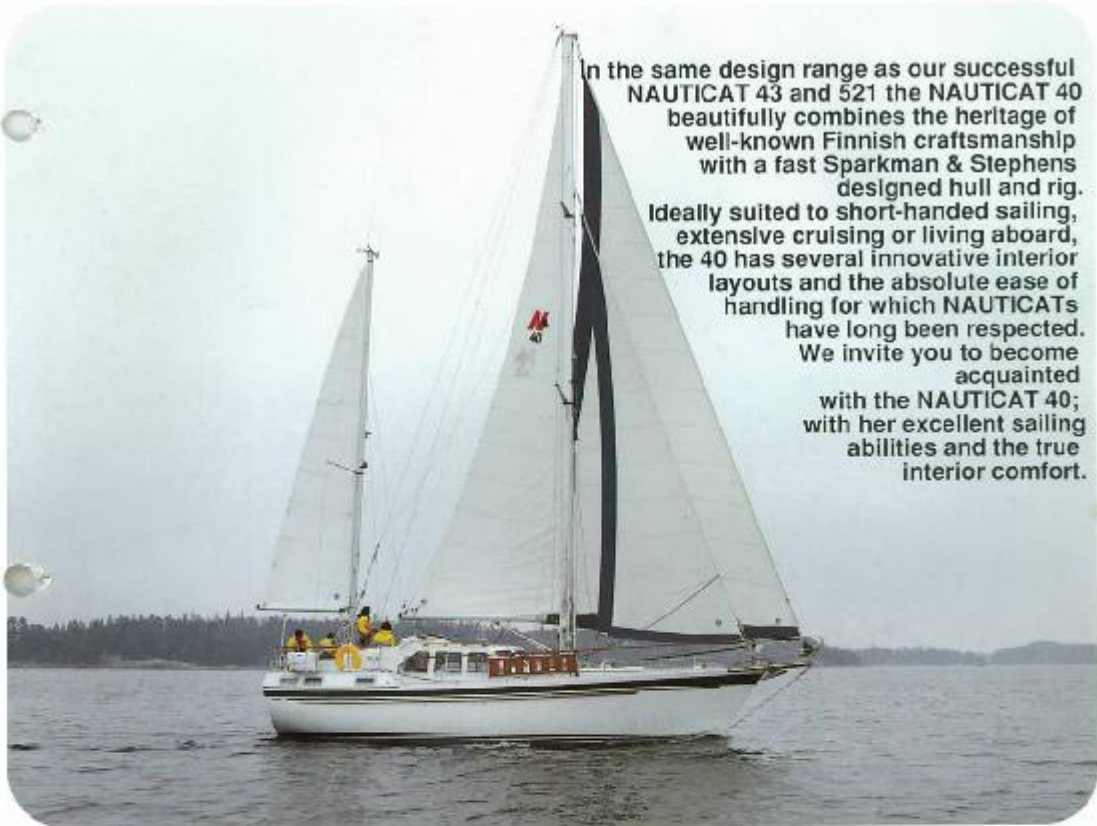
Cockpit



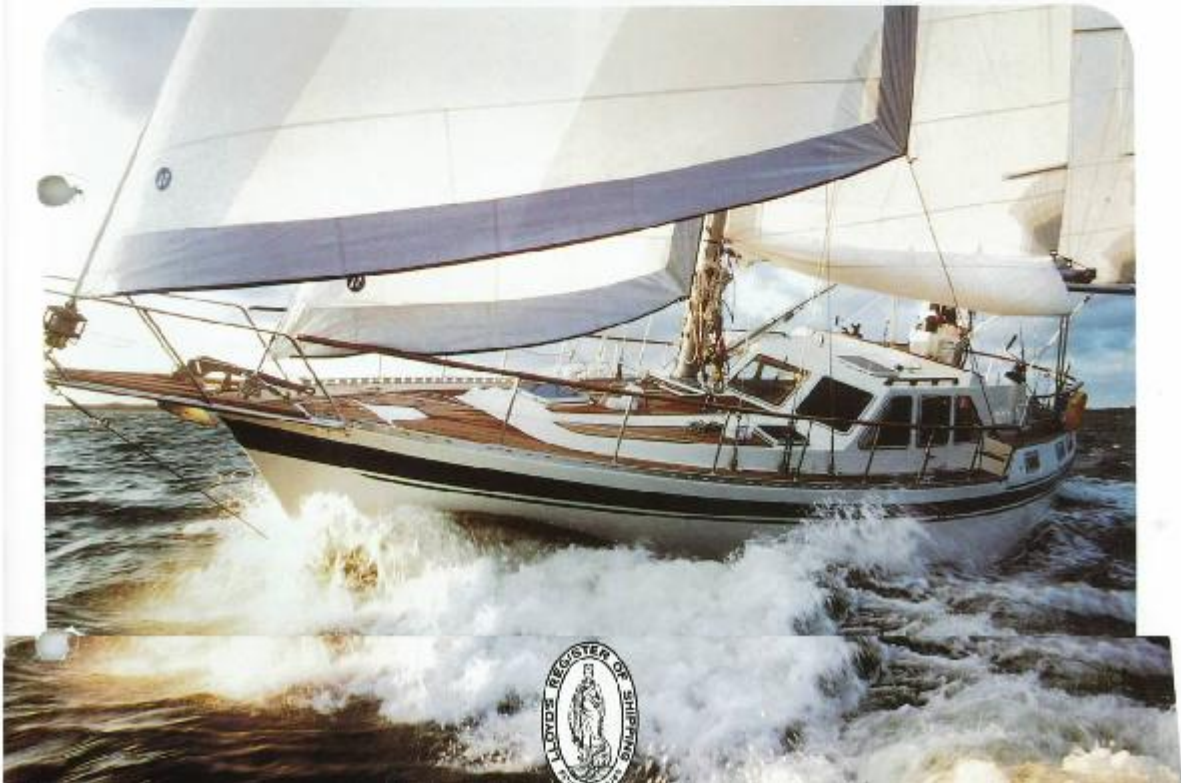
Deck salon



Pilothouse



In the same design range as our successful NAUTICAT 43 and 521 the NAUTICAT 40 beautifully combines the heritage of well-known Finnish craftsmanship with a fast Sparkman & Stephens designed hull and rig. Ideally suited to short-handed sailing, extensive cruising or living aboard, the 40 has several innovative interior layouts and the absolute ease of handling for which NAUTICATs have long been respected. We invite you to become acquainted with the NAUTICAT 40; with her excellent sailing abilities and the true interior comfort.





Fore cabin



Saloon



Galley



Forward head



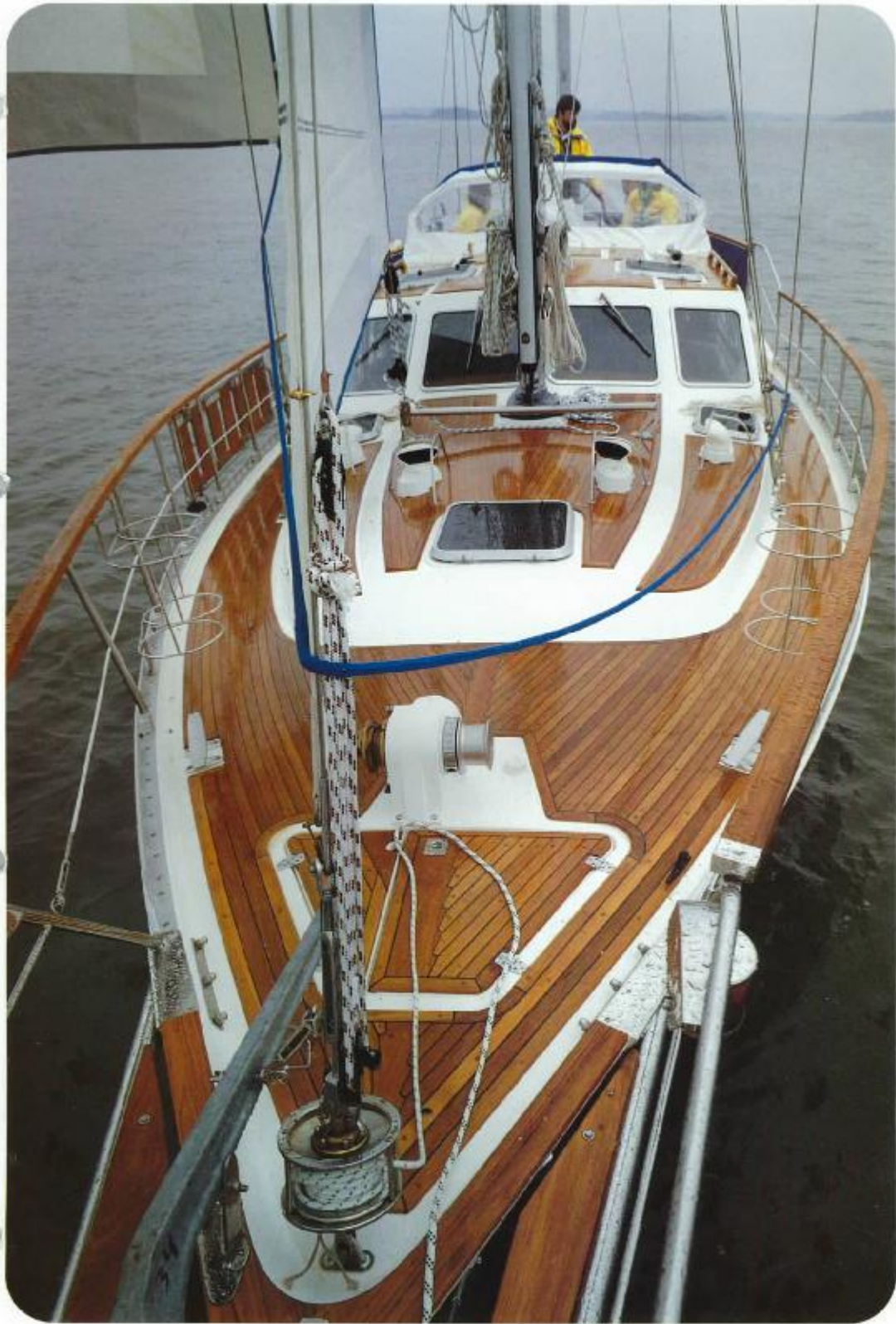
Aft head



Aft cabin



Aft cabin





1. Pilothouse



2. All deck



3. Dinette

nauti cat 40

Design Sparkman & Stephens

The NAUTICAT for your life style

Consistent with the lineage of our successful NAUTICAT 43' and 52' the new NAUTICAT 40 beautifully combines the heritage of our well-known Finnish craftsmanship with a fast Sparkman & Stephens designed hull and rig.

Ideally suited to short-handed sailing, extensive cruising or living aboard, the 40 has several innovative interior layouts and the absolute ease of handling for which NAUTICATs have long been respected.

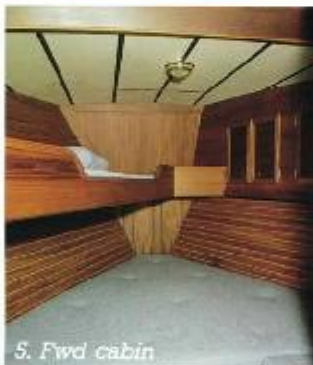
We invite you to become acquainted with our NAUTICAT 40.



4. Pilothouse



6. Aft cabin: B



5. Fwd cabin



7. Engine room



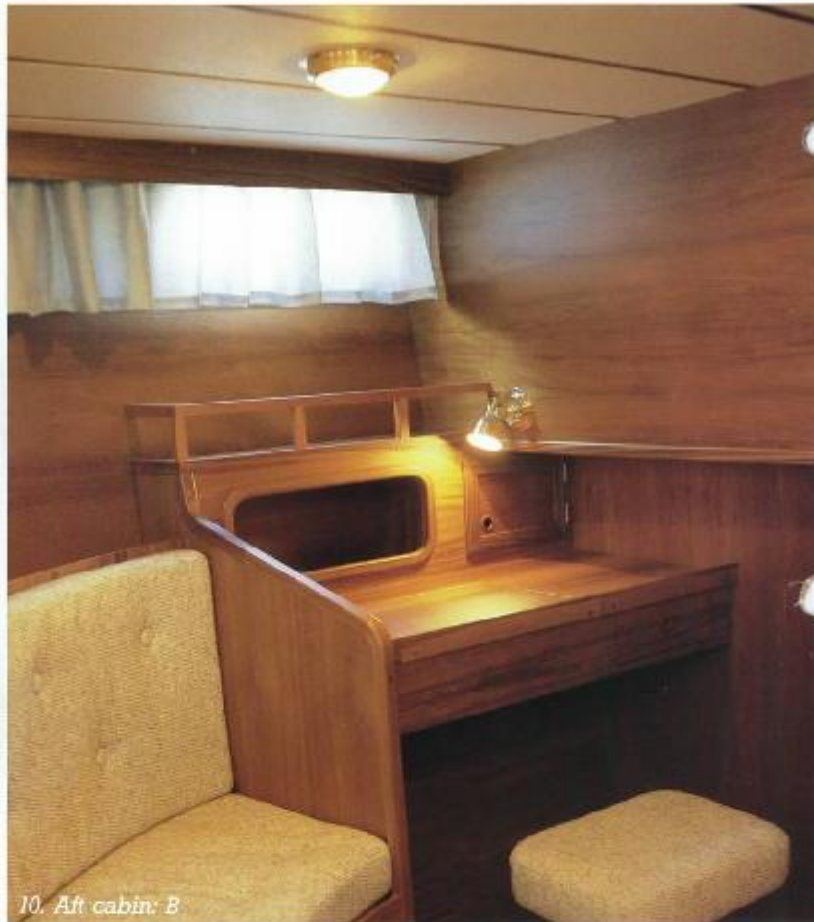
9. Head



8. Head



9. Showerroom: aft



10. Aft cabin: B



11. Galley

