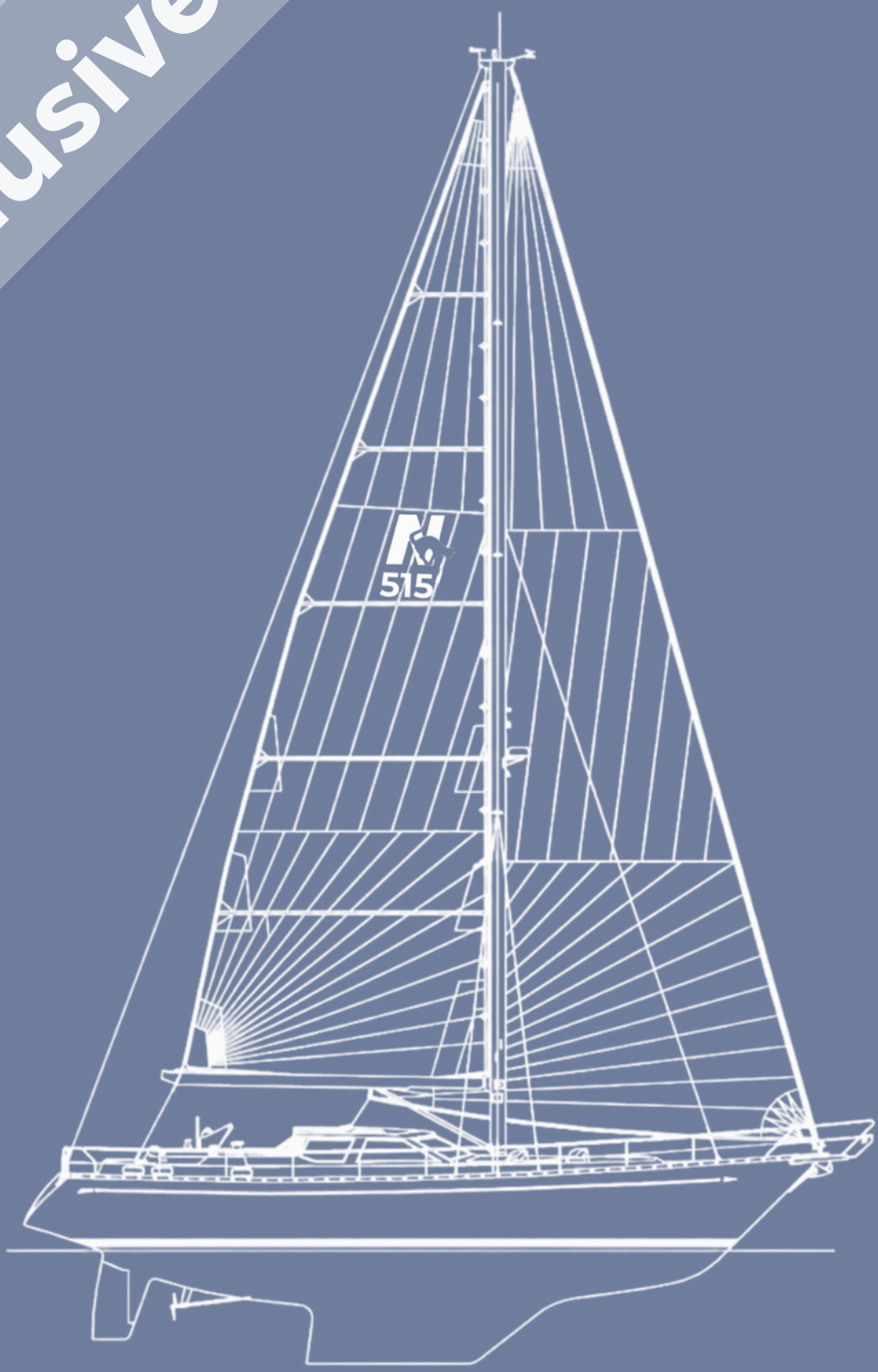


Exclusive offer



Nauticat 515

Sailing yachts



Nauticat 515

Standart specifications:

L.O.A. hull	15,42 m
Beam	4,60 m
Draft	2,20 m
Displacement	24,0 tons
Headroom	1,9 m
Fresh water capacity, approx.	1600 l
Fuel capacity	1570 l
Height above waterline, approx.	23,5 m
Engine	180 hp
Speed under power, approx.	9 knots
Cruising range, approx.	1850 nautical miles
Sail area	125.9 m ²

Nauticat 515 is classical, elegant and spacious. This reliable long-range cruiser is created for confident and safe navigation in the most difficult weather conditions. The pilothouse design provides shelter from bad weather while underway, and a diesel heater keeps you warm and cozy inside. Her solid construction also comes with the perks of a stunning yet comfortable interior, while performing well under sail.

What makes it a Nauticat?

The philosophy behind and approach to the construction. A Nauticat 515, designed by Kaj Gustafsson, is synonymous with legendary seaworthiness, toughness, durable designs, easy handling and comfortable sailing, an unbeatable combination of performance both under sail and power, highly admired quality of build and attention to detail, a pilothouse offering possibility for shelter, 360 degrees view and manoeuvrability from inside.



WHAT DO WE OFFER?

discount

-200 000 EUR

for this particular unfinished Nauticat

Price of a New Nauticat 515 with standard specification for year 2024 is

1 514 075 EUR*

*plus taxes if applicable.

This offer is not just a boat, it is not just an opportunity to join the community of Nauticat owners . It is way more: it is an opportunity to **fulfill a dream!**



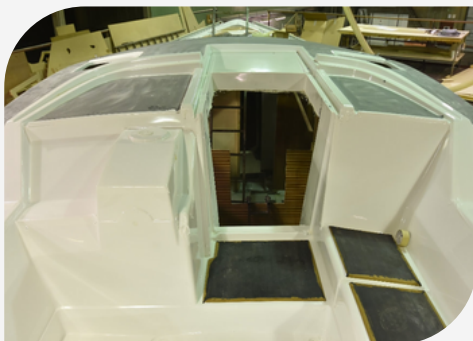
WHAT IS ALREADY DONE?

The factory readiness of this yacht is evaluated approximately

39-43%.

CONSTRUCTION

This Nauticat is laminated by hand, the hull and deck are made in single-skin laminate with unidirectional and multi-axial fibers to secure a strong laminate. The NGA gelcoat was brushed by hand on her hull- and deckmolds. The waterlines and sheerstrake were painted in the mold with gelcoat. The colour of gelcoat is rare light blue. The single skin laminate, gelcoat brushed on the hull, 3 layers of epoxy primer on the hull are important to prevent possible osmosis on the construction in future. This Nauticat is not built by using sandwiched or cored material in the deck or hull. It makes her construction solid and lasting beyond your lifetime.

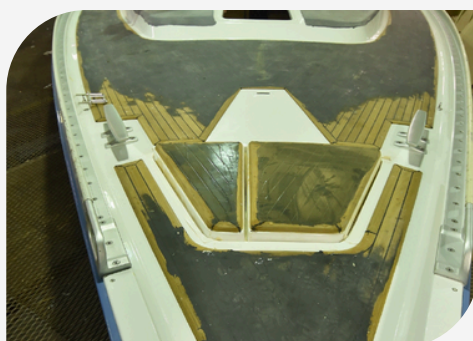
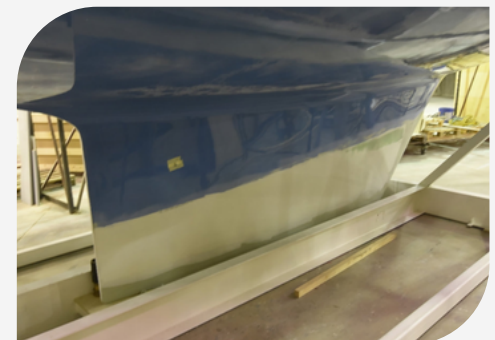


HULL AND DECK

The deck and hull of her pilothouse are connected with bolts through the deck flange, hull flange and an aluminium toe rail. This joint is also glued. This makes the complete construction very solid. Once the deck and hull had been laminated, they have been connected, and the bulkheads, the bottom stiffening framework, the engine, the water and fuel tanks are installed at this early stage of the building process. All internal bulkheads are laminated both to the deck and the hull. This makes this boat very strong and on top of that quiet and smooth when sailing in rough seas.

KEEL

The keel of this Nauticat was cast out of lead with a small portion of antimony. The keel was bonded to the mast offering lightning protection for the boat. The keel was fastened to the hull with bolts which were also casted into the lead. On top of that the keel was fastened with flexible epoxy glue to the hull. This Nauticat is equipped with a very comprehensive longitudinal and transverse bottom stiffening system for the rig, keel and engine and generator loads. Large and heavy units like the fuel tanks are also supported by this framework.



DECK

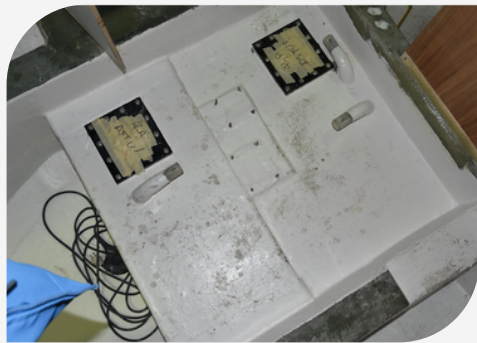
The deck construction is designed with traditional laid teak single skin deck which is already both screwed and glued to the deck, and every single piece of the teak of 13 mm thickness was separately fitted on to the deck. All that's left is the final stage to make this teak deck look gorgeous.

6 heavy duty cleats with adjacent chocks are already employed for safe mooring of the vessel, 2 forward, 2 aft and 2 midships. All windows, made of toughened safetyglass fitted in alloy frames are waiting to be installed.



ENGINE

Her mechanically injected marine diesel engine is already installed.. This is: Yanmar 4LHA-HTP (Engine output 118kW(160hp) / 3300 rpm, Cylinder volume 3.455 litres). Such engine output give this Nauticat excellent motoring capability when needed. And what is also very important, this engine can run without electricity and electronics even in the most harsh environments. The engine is installed in a spacious separate engine room, which will be sound-insulated, with access through a door in cabin and through the pilothouse floor, via hatches. Nauticats traditionally does not have saildrive onboard, only drive lines with propeller shafts. The propeller shaft through hull fitting is made in vinylester glass fiber to prevent corrosion.



TANKS

This Nauticat is designed for comfortable and safe cruising and the fuel tanks and capacity of water is already as standard suitable for extensive cruising. She has 2 polyethylene fuel tanks with total capacity of Approximately 1570 litre. This boat is equipped with 3 freshwater stainless steel tanks with total capacity of 1600 litre. The black water tank with capacity of 245l is made from laminate with vinyl ester. No corrosion and no smell from that tank.

RIGGING

The rig is from a well known producer, Selden Mast, with a high safety factor with the goal of giving this Nauticat the ability to cruise anywhere in any conditions. The mast is fitted through the deck, adding strength to the rig. Deck hardware comes from Harken. The hardware on deck is chosen with large working loads in mind. "A little bit bigger is better" clarifies the philosophy regarding deck gear. For the sails - a well known world wide North Sails mainsail and genoa (total area 125,9 m²) are waiting to be set.



WHAT NEED TO BE DONE?

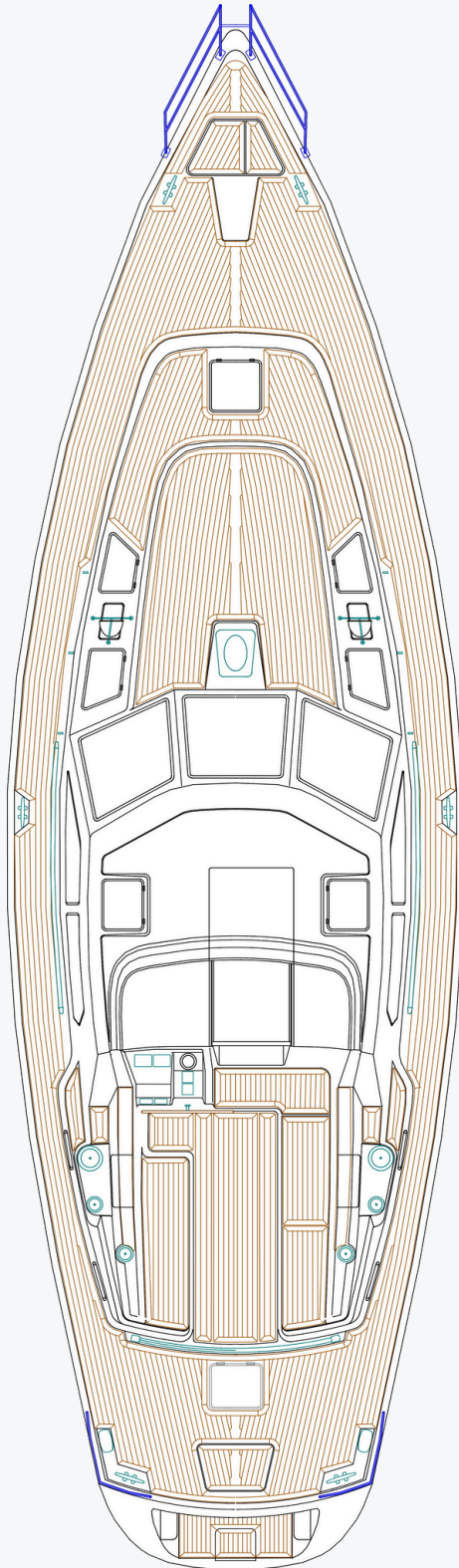
Make your boat suit your aims and desires:

- * Install all yacht systems (including electrical, steering, plumbing, gas, fuel etc)
- * Install spars and rigging
- * Install deck equipment
- * Create interior

Standard realisation for Nauticat 515 yacht (on which the price is based) can be found in standard specification. Possibility of customisation of certain positions regarding interior planning and equipment set according to client wishes (can be subject to additional costs)

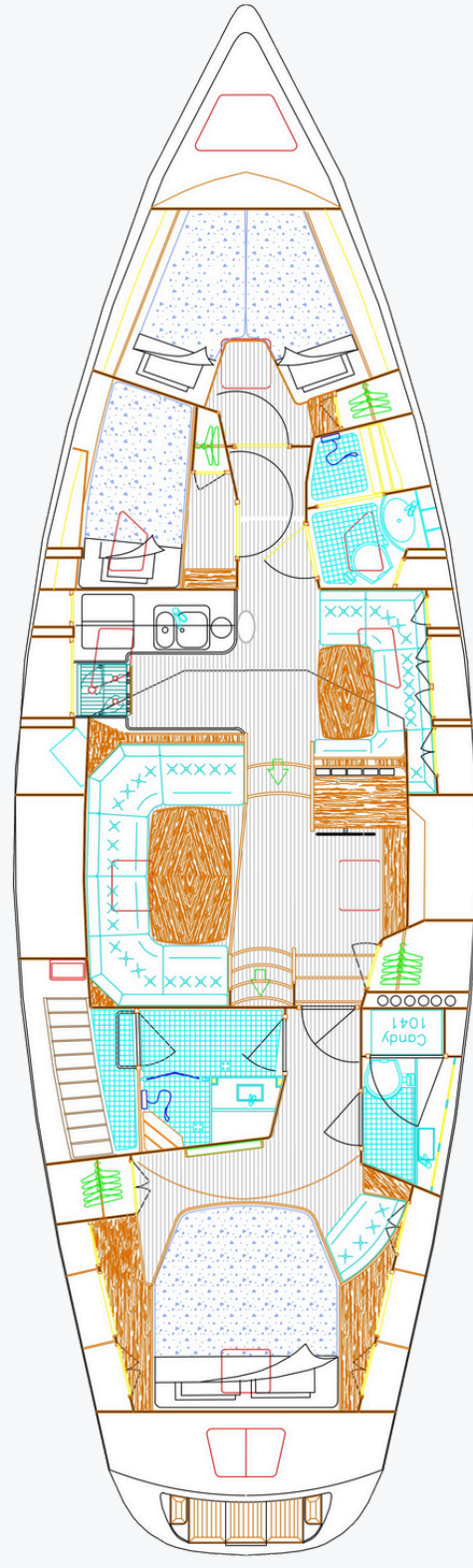
Deck plan

Possibility of customisation of the deck is limited by customisation of deck equipment only.



Current interior plan

Possibility of customisation of the interior planning, but is subject to certain conditions.



This Nauticat will carry you and your loved ones anywhere graciously at high speed!

PHOTOS OF THE CURRENT CONDITION



This Nauticat will carry you and your loved ones gracefully at high speed anywhere!



WHAT DO WE OFFER?

Discount

-200 000 EUR

for this particular unfinished Nauticat

Price of a New Nauticat 515 with standard specification for year 2024 is

1 514 075 EUR*

*plus taxes if applicable.

THE UNIQUENESS OF THIS OFFER

This Nauticat is not just a project in the computer or on paper, she can already be seen and touched.

The longest phases of her construction are already finished, which means you will be able to set sails on your new Nauticat much faster than if you ordered herto be built from scratch.

There is the possibility of almost 100% customization of your new Nauticat yacht interiors, boat systems and deck equipment as if you ordered her to be built anew!

She represents all the years of experience and professionalism of the renowned yacht manufacturer. This is the last diamond of the legendary the Finnish yacht constructor, which will be cut by the Latvian Nauticat according to your desires.

She will be finished by the official Nauticat's successor, which treasures the same values in the yacht construction as the Finnish Nauticat. That means that high quality, client's desires and safety will be our top priority

Don't miss this chance to get a unique Nauticat at a more favorable price than the cost of a regular new Nauticat 515.

If you want to know more about the model itself, about our unique offer and about customization possibilities - please don't hesitate to email us at:

sales@nauticat.com



Visit our web-site

+371 6755 8500

info@nauticat.com

Dzērbenes 14, Riga, Latvia-1006

Your dealer: